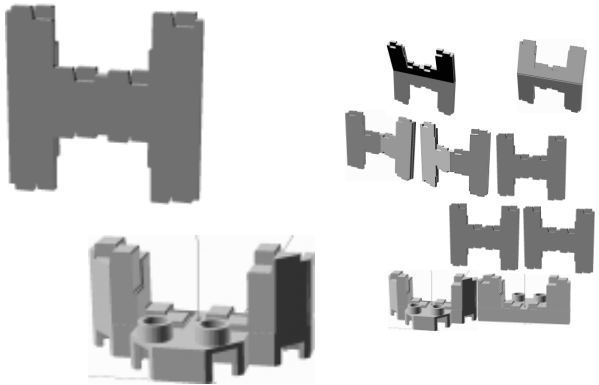


POLLWERK

modular walls, modular surfaces



POLLWERK

Advantages

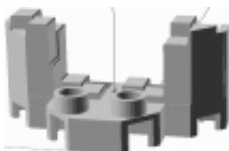
- temporary architecture which can be deassembled
- non-permanent by design which should allow more easy building permits
- leaseable, rentable, sizing by demand
- can be used for vertical oriented solar panels
- full and flexible closeup of public events, concerts etc
- Faraday temporary cage for spy protection
- less energy consumption as cement production which counts for 8% of the world energy consumption
- different wall thicknesses, different materials
- stable as paravent construction is possible
- modules can be assembled mechanically together
- emergency housing

POLLWERK

Application areas:

- flexible inside walls/room splitter
- sound barriers
- flexible (bulk) storage facilities
- garden facilities
- insulation surface walls

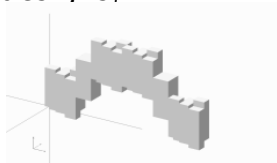
.. well, its up to you and your children (in a smaller, lightweight size)



Needed skilled partners:
for local manufacturing

- Concrete casting
 - OSB Processing
 - Transparent materials
 - Tanks for water fill
 - Assembly/Disassembly
- Countries/Regions
- USA
 - Europe (DE, FR, IT..)
 - Turkey
 - Brazil
 - South Africa
 - China
 - Australia

Offer: Patent and process protection
including other designs:



Patents already granted in DE, US, ZA,
other countries ongoing.

License fees: 7% (down to 5%) royalties
on end product price

Interested in collaboration and
cross licensing/royalties exchange in

- new materials
- solutions in sound reduction
- (wood) material durability
- product forming for (flexible) angles
- insulation materials (incl. VIP)
- camping equipment
- LED based flexible advertising panels
- GRC production
- toy industry incl. LEGO adapters